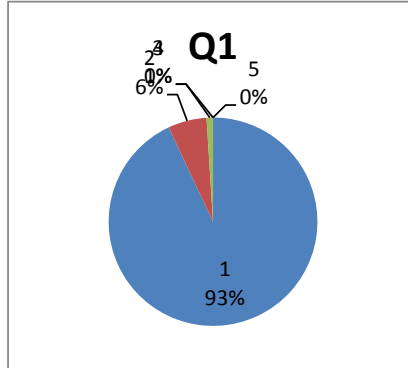


A student satisfaction survey is conducted by the college to find out the expectation of the student from the college and whether we have been able to achieve it. It also gives an insight on the areas of improvement. These surveys have always rated the faculty as excellent and they are completely satisfied with the teachers.

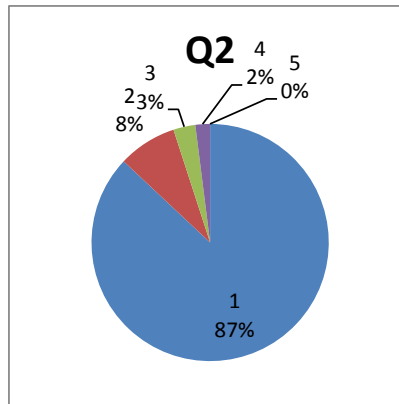
1. How much of the syllabus was covered in the class?

4 – 85 to 100%	93
3 – 70 to 84%	6
2 – 55 to 69%	1
1– 30 to 54%	0
0 –Below 30%	0



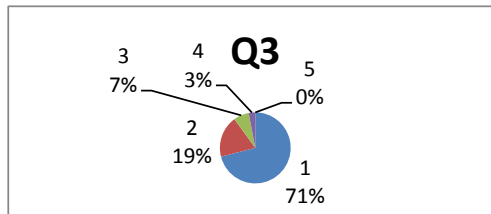
2. How well did the teachers prepare for the classes?

4 –Thoroughly	87
3 – Satisfactorily	8
2 – Poorly	3
1 – Indifferently	2
0 – Won't teach at all	0



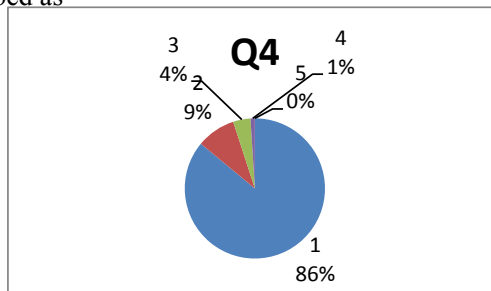
3. How well were the teachers able to communicate?

4 – Always effective	71
3 – Sometimes effective	19
2 – Just satisfactorily	7
1– Generally ineffective	3
0– Very poor communication	0



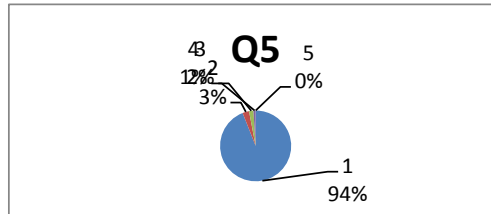
4. The teacher's approach to teaching can best be described as

4– Excellent	86
3 – Very good	9
2 – Good	4
1 – Fair	1
0– Poor	0



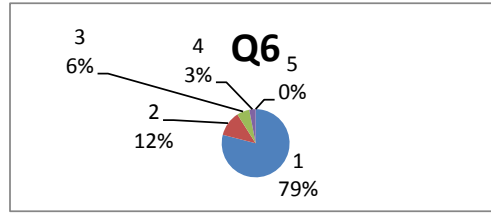
5. Fairness of the internal evaluation process by the teachers.

4 – Always fair	94
3 – Usually fair	3
2 – Sometimes unfair	2
1 – Usually unfair	1
0– Unfair	0



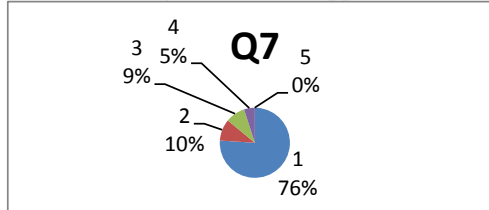
6. Was your performance in assignments discussed with you?

4 – Every time	79
3 – Usually	12
2 – Occasionally/Sometimes	6
1 – Rarely	3
0– Never	0



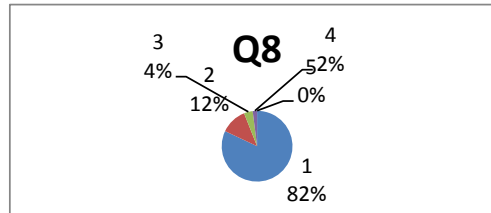
7. The institute takes active interest in promoting internship, student exchange, field visit opportunities for

4 – Regularly	76
3 – Often	10
2 – Sometimes	9
1 – Rarely	5
0– Never	0



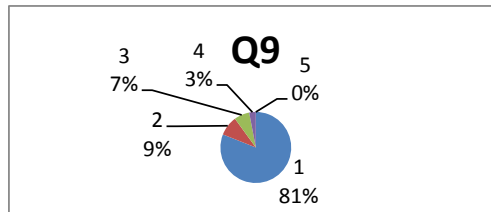
8. The teaching and mentoring process in your institution facilitates you in cognitive, social and emotional

4 – Significantly	82
3 – Very well	12
2 – Moderately	4
1 – Marginally	2
0– Not at all	0



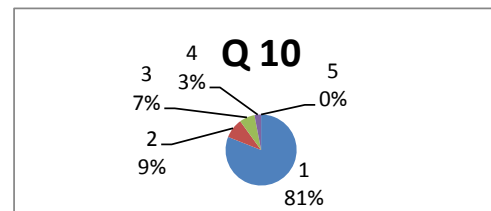
9. The institution provides multiple opportunities to learn and grow.

4 – Strongly agree	81
3 – Agree	9
2 – Neutral	7
1 – Disagree	3
0– Strongly disagree	0



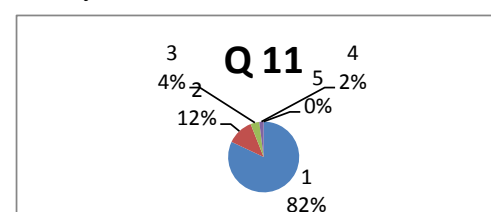
10. Teachers inform you about your expected competencies, course outcomes and programme outcomes.

4 – Every time	81
3 – Usually	9
2– Occasionally/Sometimes	7
1 – Rarely	3
0– Never	0



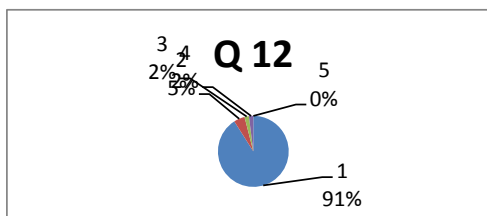
11. Your mentor does a necessary follow-up with an assigned task to you.

4 – Every time	82
3 – Usually	12
2 – Occasionally/Sometimes	4
1 – Rarely	2
0 – I don't have a mentor	0



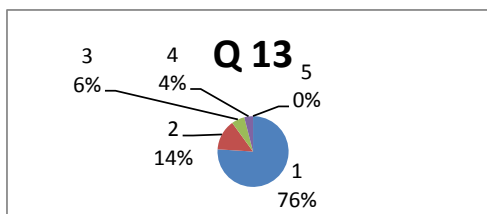
12. The teachers illustrate the concepts through examples and applications.

4 – Every time	91
3 – Usually	5
2 – Occasionally/Sometimes	2
1 – Rarely	2
0 – Never	0



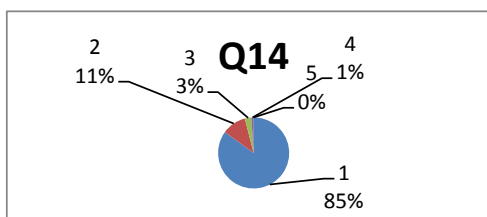
13. The teachers identify your strengths and encourage you with providing right level of challenges.

4 – Fully	76
3 – Reasonably	14
2 – Partially	6
1 – Slightly	4
0 – Unable to	0



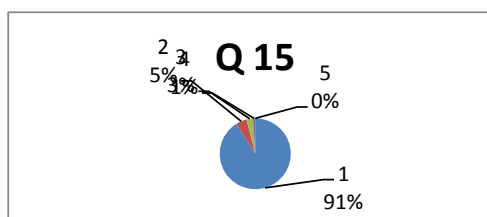
14. Teachers are able to identify your weaknesses and help you to overcome them.

4 – Every time	85
3 – Usually	11
2 – Occasionally/Sometimes	3
1 – Rarely	1
0 – Never	0



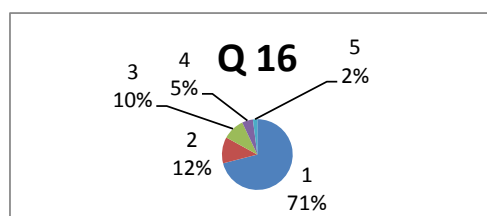
15. The institution makes effort to engage students in the monitoring, review and continuous quality improvement of the teaching learning process.

4 – Strongly agree	91
3 – Agree	5
2 – Neutral	3
1 – Disagree	1
0 – Strongly disagree	0



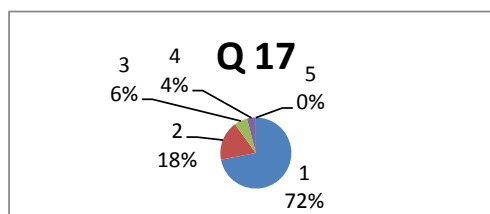
16. The institute/ teachers use student centric methods, such as experiential learning, participative learning and problem solving methodologies for enhancing learning experiences.

4 – To a great extent	71
3 – Moderate	12
2 – Some what	10
1 – Very little	5
0 – Not at all	2



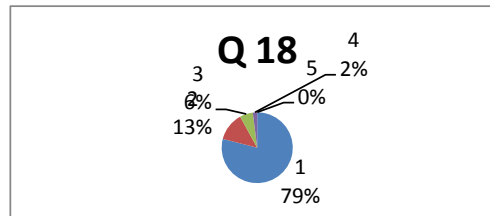
17. Teachers encourage you to participate in extracurricular activities.

4 – Strongly agree	72
3 – Agree	18
2 – Neutral	6
1 – Disagree	4
0 – Strongly disagree	0



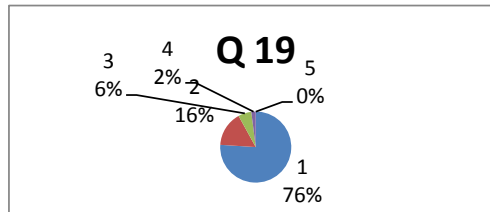
18. Efforts are made by the institute/ teachers to inculcate soft skills, life skills and employability skills to make you ready for the world of work.

4 – To a great extent	79
3 – Moderate	13
2 – Some what	6
1 – Very little	2
0 – Not at all	0



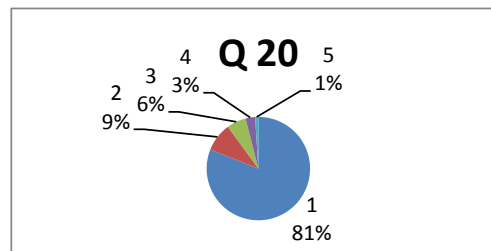
19. What percentage of teachers use ICT tools such as LCD projector, Multimedia, etc. while teaching.

4 – Above 90%	76
3 – 70 – 89%	16
2 – 50 – 69%	6
1 – 30 – 49%	2
0 – Below 29%	0



20. The overall quality of teaching-learning process in your institute is very good.

4 –Strongly agree	81
3 – Agree	9
2 – Neutral	6
1 – Disagree	3
0 – Strongly disagree	1



21. Provide observation / suggestions to improve the overall teaching – learning experience in your institution.

- ❖ Faculty are very much interested in explaining subject oriented examples, very very fair in correcting
- ❖ Overall good teaching
- ❖ We are fine with faculty with good suggestions
- ❖ More interaction
- ❖ Fine with faculty
 - ❖ In our college there is a very best thing which is called as wit and will programme. but i hope this
- ❖ Our CLG as separate agenda that is WIT and WIL.... Should give more practical learning
- ❖ Excellent faculty
- ❖ Excellent teaching Nice practical knowledge Overall best in all factors
 - ❖ Attendance min percentage must be reduced to 60%. So that we will have more time to learn about the
- ❖ The changes in teaching style and the learning are not required, everything is perfect.
- ❖ Students are given wit and will reports which are enhancing their knowledge by learning the applications.

Regarding the coverage of syllabus, 96% of students satisfied with the coverage more than 70 percent. The

Having the continuous efforts put by institute, 83% of students mentioned that the field trips/internships are

The teaching and learning process in the institute with the implementation of modern and distinctive pedagogical

In overall, 92% students strongly agree with the statement that the quality of teaching-learning process in the institute is very good